



The remodeled kitchen accommodates two cooks and includes granite countertops and a mosaic tile backsplash.

## Remodelers Corner

SUZANNE JONES

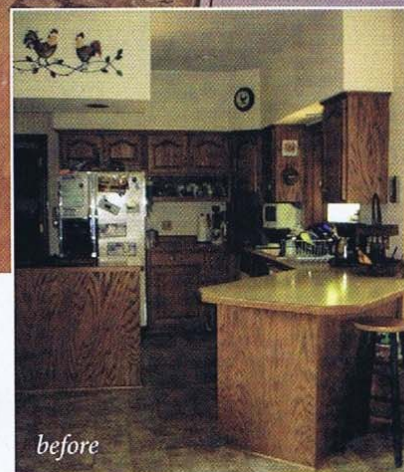
PHOTOGRAPHY BY OLIVE JUICE STUDIOS

**B**uilt in 1989, this southwest Rochester home was ready for a change. Designer Karen Blissenbach of Design Studio B came highly recommended to the homeowners as turn-key, flexible and easy to work with.

They chose to remodel in stages beginning with the family room. With laminate wood flooring in the sun room, carpet in the TV area, and vinyl flooring extending from the kitchen, the goal was to open up the area and to arrange the furniture more functionally. Karen designed a furniture layout that defined areas for TV, reading and homework. Architectural columns, a new fireplace surround and wall sconces made the fireplace the focal point. The white walls

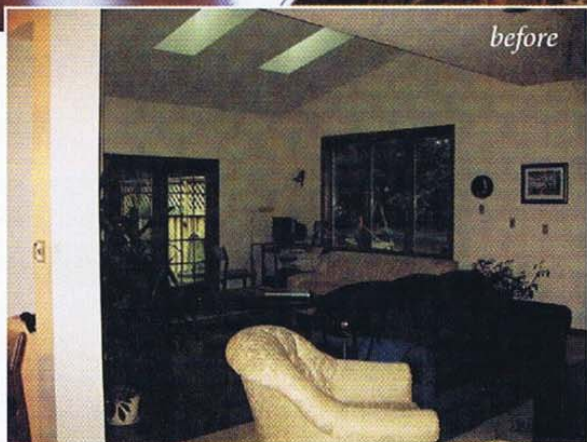
were painted with warm rich colors. Brazilian cherry floors, flat roman shades, and custom upholstered furniture transformed this family room from commonplace to eloquent and classic.

The kitchen was next. Design Studio B started the demolition after the cabinets were ordered to minimize inconvenience. The new kitchen features a layout that accommodates two cooks and includes granite counter tops with limestone and slate, and a mosaic glass tile back splash. The glaze painted cabinetry, custom stained island and a stained glass cabinet draw all the elements together. Unique light fixtures and oiled bronze appliances complete the sophisticated look.



These Design Studio B clients couldn't be happier. "The colors and textures are great. We use the space so much more — I can't get people out of the kitchen at night so I can wipe down the table or island! Friends are amazed at how different the space is — it all works together so much better and makes so much more sense visually. We are doing the basement next, and Design Studio B is holding my hand through this project as well."

*Suzanne Jones is a freelance writer and busy mother of two girls. She would love to see how Design Studio B could transform her home.*



Brazilian cherry flooring unites three areas of the family room, with the fireplace as the focal point.

### Subcontractors & Suppliers:

A to Z Flooring  
Energy Products and Design  
Gander Plumbing and Heating  
Great Northern Cabinetry  
Hicks Electric  
KC Tile  
Perry Paint Contracting  
Plain and Fancy Cabinetry  
Radcliffe Homes and Remodeling  
Stevens Heating  
Stone Concepts  
Top Shop of Rochester

### Designer:

DESIGN STUDIO B

### Project:

KITCHEN & FAMILY ROOM

REMODEL